

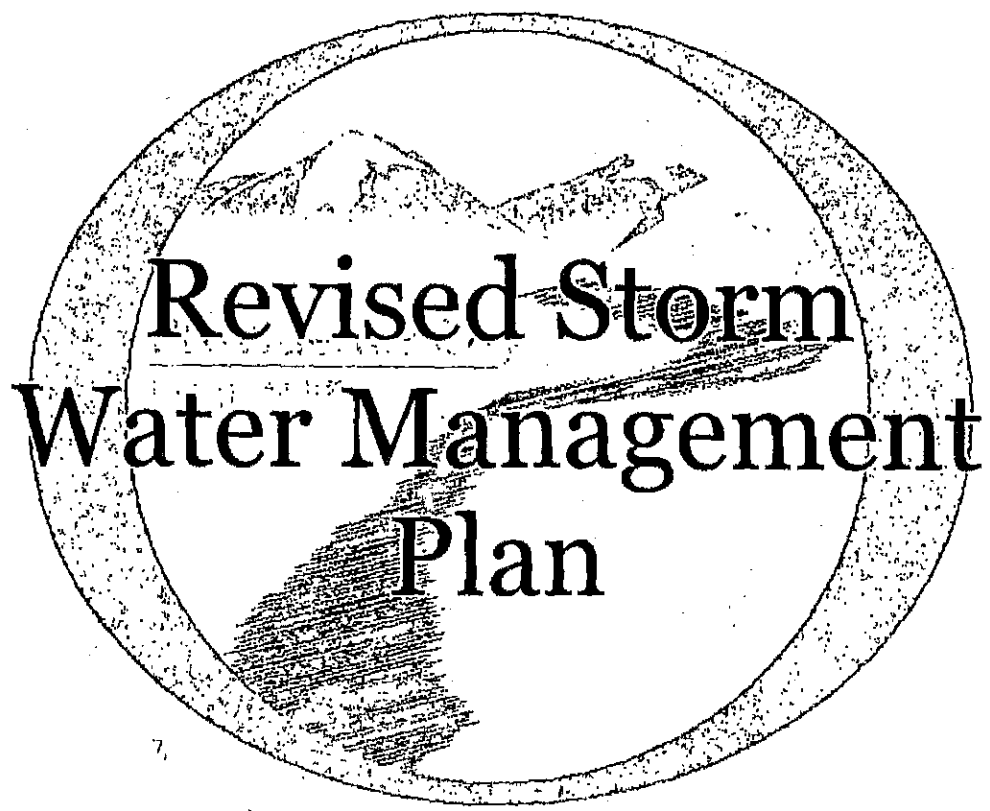
Rhonda

RECEIVED

DEC 01 2010


DIVISION OF
WATER QUALITY
DW

Providence City



Permit # UTR 090031

Document Date 11/30/2010



DWQ-2010-008166

I certify under penalty of law that this document and all attachments were prepared under my direction or supervision in accordance with a system designed to assure that qualified personnel properly gathered and evaluated the information submitted. Based on my inquiry of the person or persons who manage the system, or those persons directly responsible for gathering the information, the information submitted is, to the best of my knowledge and belief, true, accurate, and complete. I am aware that there are significant penalties for submitting false information, including the possibility of fine and imprisonment for knowing violations.



Ronald S. Liechty, Mayor

11/30/2010
Date

1. Public Education and Outreach

Goal was to establish and participate in Interlocal storm water education/public participation program.

- Established and participating

Goal was to send letters to citizens (2) annually, display information on bulletin boards (2) annually and post information on the City website.

- Implemented but not to full extent

2. Public Participation and Involvement

Goal was to have a (1) community clean-up day annually, compile a list of available community projects that are available and conduct (2) steering committee meetings annually.

- Dumpsters for clean-up day
- Other goals implemented but not to full extent

3. Illicit Discharge Detection and Elimination

Goal was to review and pass "IDDE" ordinance.

- Done, ordinance 7.8.3 and 7.8.6 (08/28/07)

Goal was to set up reporting process and publish in newsletter.

- Established but not published as of date

Goal was to post (2) signs.

- Done

Goal was to send (1) employee to County wide education program.

- Not accomplished to date

4. Construction Site Run-off Control

Goal was to review and adapt erosion and sediment control ordinances.

- Ordinance 7.8, 7.9 and 7.10 (08/28/07)

Goal was to establish guidelines and minimum requirements for sediment and erosion control plans.

- Not established to date

Goal was to establish written procedures for storm water inspections.

- Established and functioning

Goal was to prepare an information packet for development packets.

- Not established to date

5. Post Construction Run-off Control

Goal was to review and adopt ordinances.

- Ordinance 7.10 (08/28/07)

Goal was to set up plan review procedures.

- Functioning

6. Pollution Prevention/Good Housekeeping

Goal was to develop a street sweeping program.

- Streets with curb and gutter are swept annually

Goal was to develop a catch basin cleaning program.

- Catch basins (boxes) are cleaned annually

Goal was to develop a parking lot sweeping program.

- City owned parking lots are swept annually

Goal was to train employees.

- Employees are trained annually

Public Education and Outreach Program

Objective: To promote behavior change by the public to reduce water quality impacts associated with pollutants in storm water runoff and illicit discharges.

The Providence City public education and outreach program is designed to use a multi media approach to reach the target audiences that are desired. These approaches include but are not limited to: Providence City website, www.providencecity.com, monthly newsletters, mailers, local media and other educational arenas.

The following four (4) groups are the desired target audiences for this program;

Providence City residents
Local businesses, religious organizations
Commercial facilities
MS4 Industrial facilities

1. Information provided to the general public will consist of (the following) topics most relevant to the residents of Providence City.
2. Information provided to businesses, institutions (religious organizations) will focus on quality impacts associated with illicit discharges and improper disposal of waste. This program will focus on topics most relevant to the community.
3. Information provided to engineers, contractors, developers and staff will focus on development of Storm Water Pollution Prevention Plan (SWPPP), Best Management Practices (BMP's) Low Impact Development (LID) for reducing adverse impacts from storm water runoff from development sites.
4. Information provided to employees of Providence City will focus on water quality impacts associated with illicit discharges and improper disposal of waste.

Information provided to the specific target audiences will be documented and records kept.

This program chooses BMP's based on relevance and need to the community of Providence.

Public Involvement/Participation Program

Objective: To provide ongoing opportunities for public involvement and participation within Providence City and our ongoing storm water program.

Providence City recognizes the value of citizen input to the development, implementation and update of our current storm water management plan (SWMP) and associated ordinances.

A current version of the Providence City Storm Water Management Plan is available for public review and input for the life of the permit. The latest version of this document is also posted on the Providence City website, www.providencecity.com.

The Providence City public involvement/participation program requires State and local public notice regulations to be followed.

Illicit Discharge Detection and Elimination Program (IDDE)

Objective: To provide a systematic process to find and eliminate sources of non-storm water discharges from Providence City Municipal Separate Storm Sewer System (MS4) and to implement defined procedures to prevent illicit connections to the system.

Providence City has and maintains a current storm sewer system map of our MS4. This map shows locations of all municipal storm sewer outfalls with the names and location of all State waters that receive discharges from said outfalls, storm drain pipes and other storm water conveyance structures within the MS4.

Providence City has a storm water ordinance (7-8-3 & 7-8-6) that provides rules, regulations and penalties that govern illicit discharges within the boundaries of the City.

Current City ordinance 8-4-12 provides this program with the legal authority to detect, investigate, eliminate and enforce against non-storm water discharges, including illegal dumping. This authority is vested to the Public Works Director or his assigns (4-2-3-2-1).

Plan to Detect and Address Non-Storm Water Discharges

Providence City is committed to the detection, investigation and elimination of non-storm water discharges into the MS4.

The following priority areas are listed in order of concern and will be treated and addressed in such order;

- Area's with older infrastructure that are more likely to have illicit connections.
- Area's upstream of sensitive water bodies.
- Area's with onsite sewage disposal systems.
- Industrial, commercial or mixed use areas.

Providence City will participate in field assessment for the purpose of verifying outfall locations and detecting illicit discharges. The previous priority areas will be used in determining the areas of focus. A field assessment from shall be used to document these activities and the subsequent findings.

Whether performing field assessments or responding to a report of a possible illicit discharge, the following procedures should be used.

- A visual inspection of the reported site will be conducted by authorized personnel in a timely manner. Inspections resulting in finding an illicit discharge will be photographed and written documentation taken. If an illicit discharge is found, it should be immediately evaluated and steps should be taken to contain the discharge.

The illicit discharge inspection form should be used for all investigations and the spill/dumping response flow chart should be followed.

Illicit discharge hotline number will be posted on the Providence City website.

Documentation for Priority List of Illicit Discharge Emphasis

1. Older Infrastructure - Illicit discharge has not been enforced in Providence City for very long and it seems prudent to start here.
2. Area's Upstream - Need to protect sensitive water is important to us. (Spring Creek)
3. Onsite Disposal - We still have a few residents using septic systems and we feel it important to monitor them.
4. Industrial, Commercial - Fairly new in Providence City, but we desire to monitor them for compliance because of chemicals used and potential dangers of such.

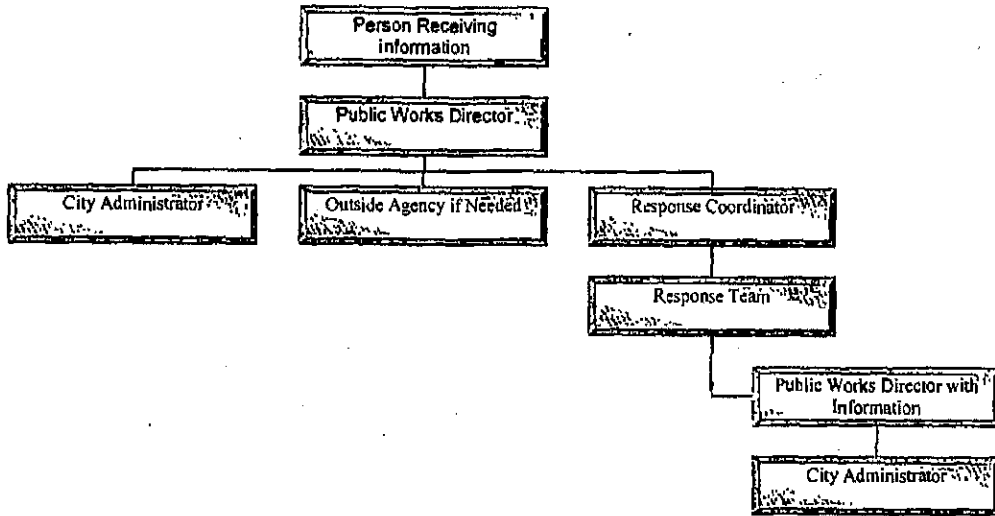
Illicit Discharge Investigation Form

Today's Date	Date Investigation Started
Date Became Aware/Date Reported	
Time Became Aware/Time Reported	
Name & Contact Information of Party Reporting Discharge	
Description of Events Leading up to Discovery	
Location of Discharge	
Description of Discharge	
Date of Removal, Repair or Enforcement Action	
Date and Method of Removal Verification	
Analytical Monitoring Used <input type="checkbox"/> yes <input type="checkbox"/> no, if yes lab used	
Contact Made With Responsible Party <input type="checkbox"/> yes <input type="checkbox"/> no Responsible Party Name and Contact Information	
Method Reported	

Name

Signature

Spill/Dumping Response Flow Chart



Construction Site Storm Water Run-off Control

Still to be developed.

Long Term Storm Water Management (Post Construction)

Objective: For the hydrology associated with new development to mirror the pre-development hydrology of the previously undeveloped site or to improve the hydrology of a redeveloped site and reduce the discharge of storm water.

This program applies to private and public development sites, including roads.

Individuals or entities involved with post construction management shall document how the selected BMP's protect water quality and reduces the discharge of pollutants to the MS4. Documentation shall include but is not limited to;

- How long term BMP's were selected
- The pollutant removal expected from the selected BMP's; and
- The technical basis which supports the performance claims for the selected BMP's

Individuals or entities involved with post construction management must ensure that any storm water controls or management practices will prevent or minimize impacts to water quality.

The policy encourages development and redevelopment be minimized in area's susceptible to erosion and sediment loss; to minimize the disturbance of native soils and vegetation; to preserve areas in the municipality that provide important water quality benefits; to implement measures for flood control; and to protect the integrity of natural resources and sensitive areas.

This program allows for, encourages and requires that low impact development (LID) be considered in development or redevelopment projects that disturb greater than or equal to one acre, including projects less than one acre that are part of a larger common plan of development or sale.

Providence City recognizes a low impact development approved which encourages the implementation of structural BMP's, where practicable, that infiltrate, evapotranspire or harvest and use storm water from the site to protect water quality. Structural controls may include green infrastructure practices such as rainwater harvesting (in accordance with State law), rain gardens, permeable pavement and vegetation swales. The selection and design of all post construction controls must take into consideration clogging or obstruction issues, freeze/thaw problems, effects on slope stability and ground water and the ability to effectively maintain the control.

When existing developed sites are found to be adversely impacting water quality, redevelopment or retrofitting of the site must be considered. The retrofit plan must be developed to emphasize controls that infiltrate, evapotranspire or harvest and use storm water discharges.

The following should be considered when developing a retrofit plan;

- Proximity to water body
- Status of water body to improve impaired water bodies and protect unimpaired water bodies
- Hydrologic condition of the receiving water body
- Proximity to sensitive ecosystem or protected area
- Any upcoming sites that could be further enhanced by retrofitting storm water controls

Pollution Prevention/Good Housekeeping

Public Buildings

- Library
- City Offices (2)

- Parking lots – high priority

Park Facilities

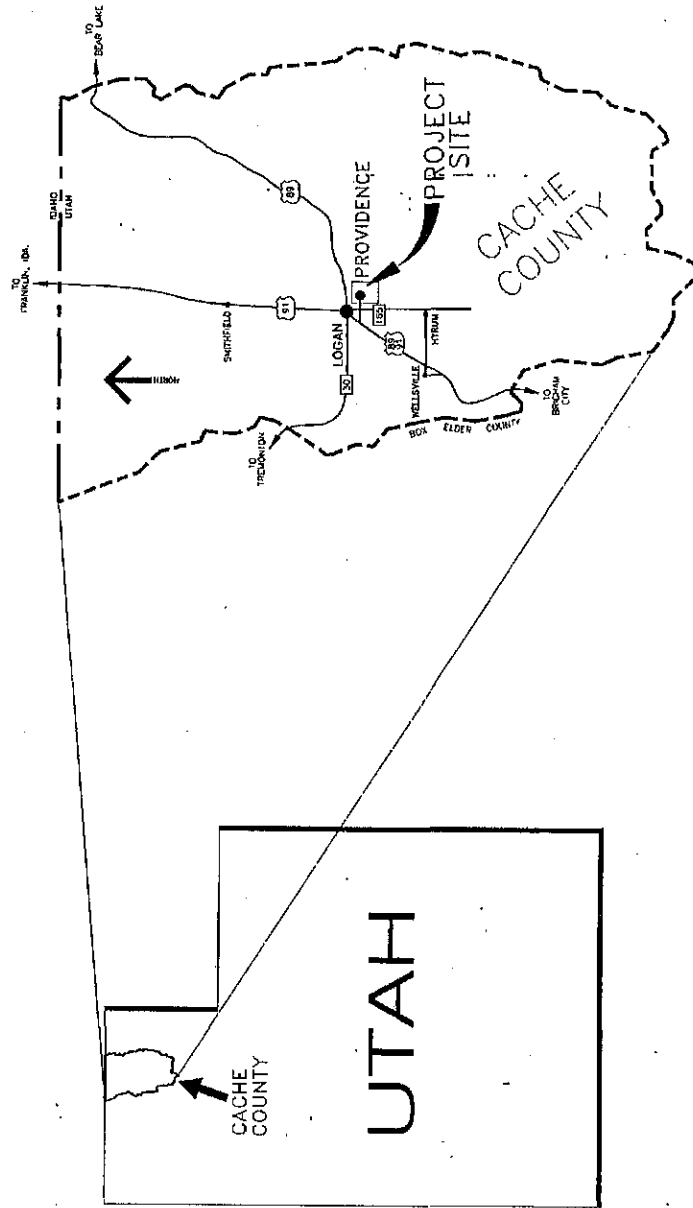
- Baseball Complex
- Splash Pad
- 2nd Pond at Hampshire Park
- City Parks and Trails
- All structural BMP's city wide

- All City streets – high priority

Public Works Facility – All covered under sector "P" permit

- Shop (equipment storage and maintenance facilities)
- Salt storage – high priority
- Fuel storage – high priority
- Vehicle storage
- Material storage
- Recycling facilities
- Public parking lots (city owned)
- Clarifier/wash out – high priority

MS4 Location Map

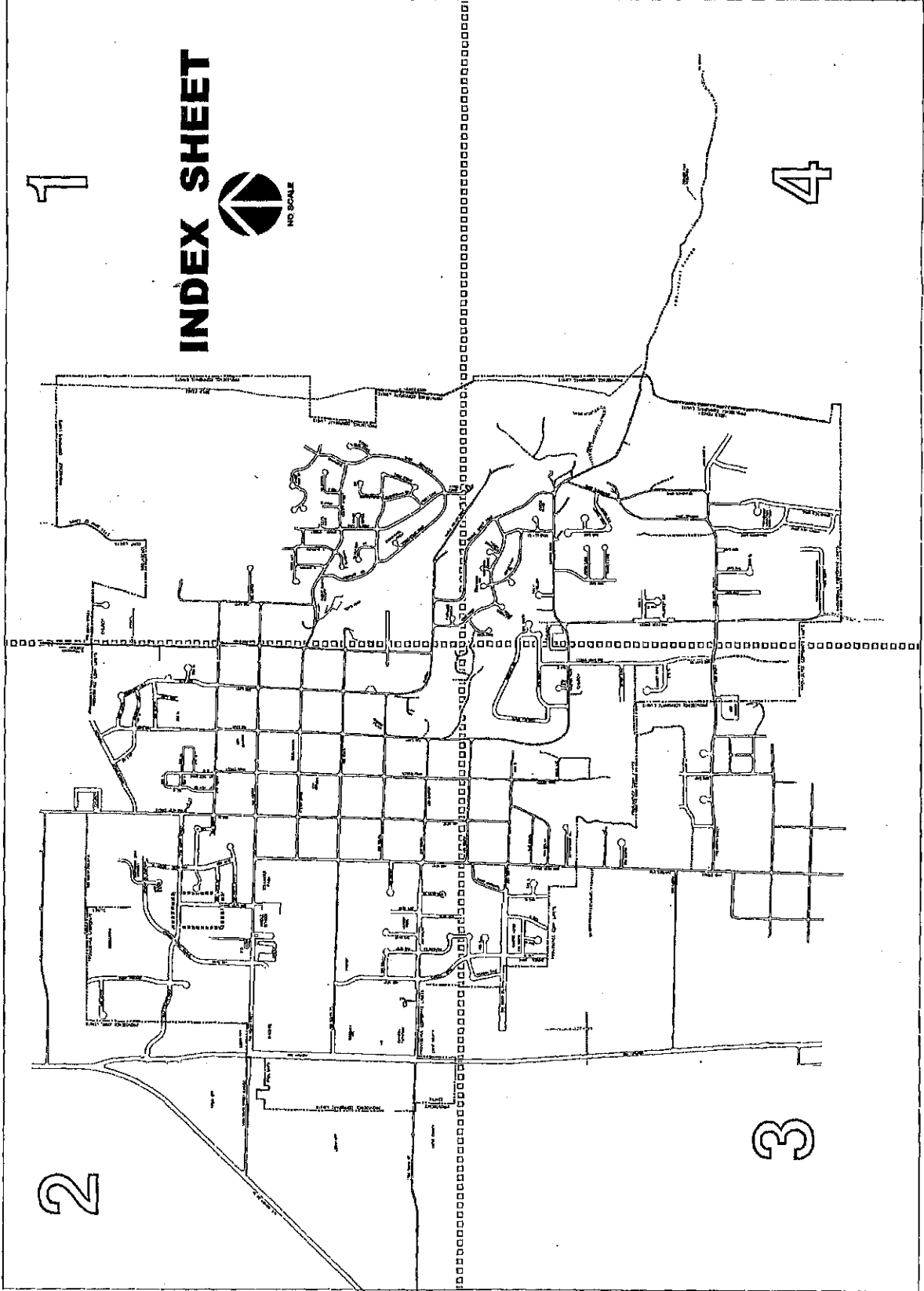


1

INDEX SHEET



4



2

3

1

PROVIDENCE CITY CORPORATION STORM WATER MAP OF CURRENT SERVICE

A PART OF THE PROVIDENCE CITY INFRASTRUCTURE MAP SERIES
FOR THE STUDY OF FUTURE DEVELOPMENT IMPACTS
AND OTHER PURPOSES

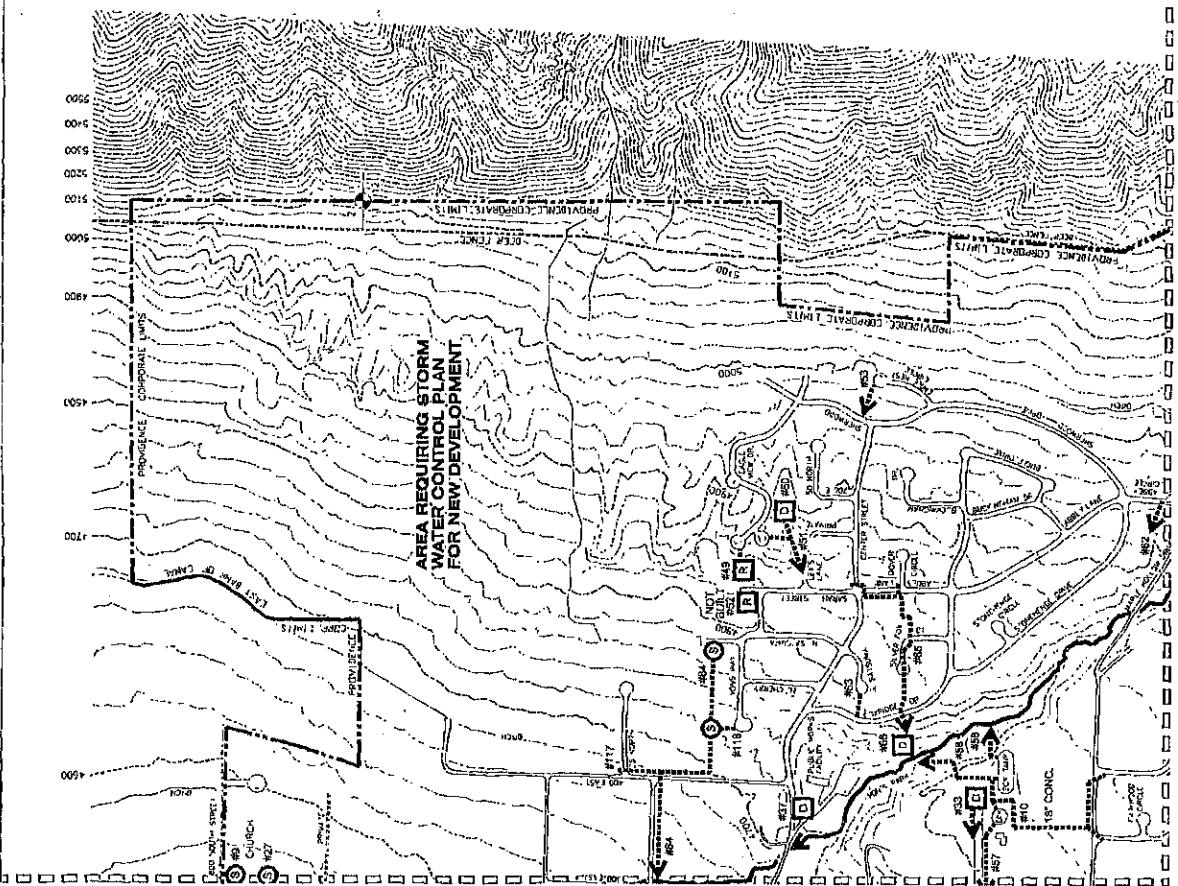
PREPARED BY: SURVIVANCE, INC. / SUITE 101
95 WEST HOLLYWOOD ROAD, SUITE 101
CARTERSVILLE, GA 30109
PROJECT NO. 07-115

LAST REVISION: OCTOBER 25, 2007
20 FOOT CONTOUR INTERVAL

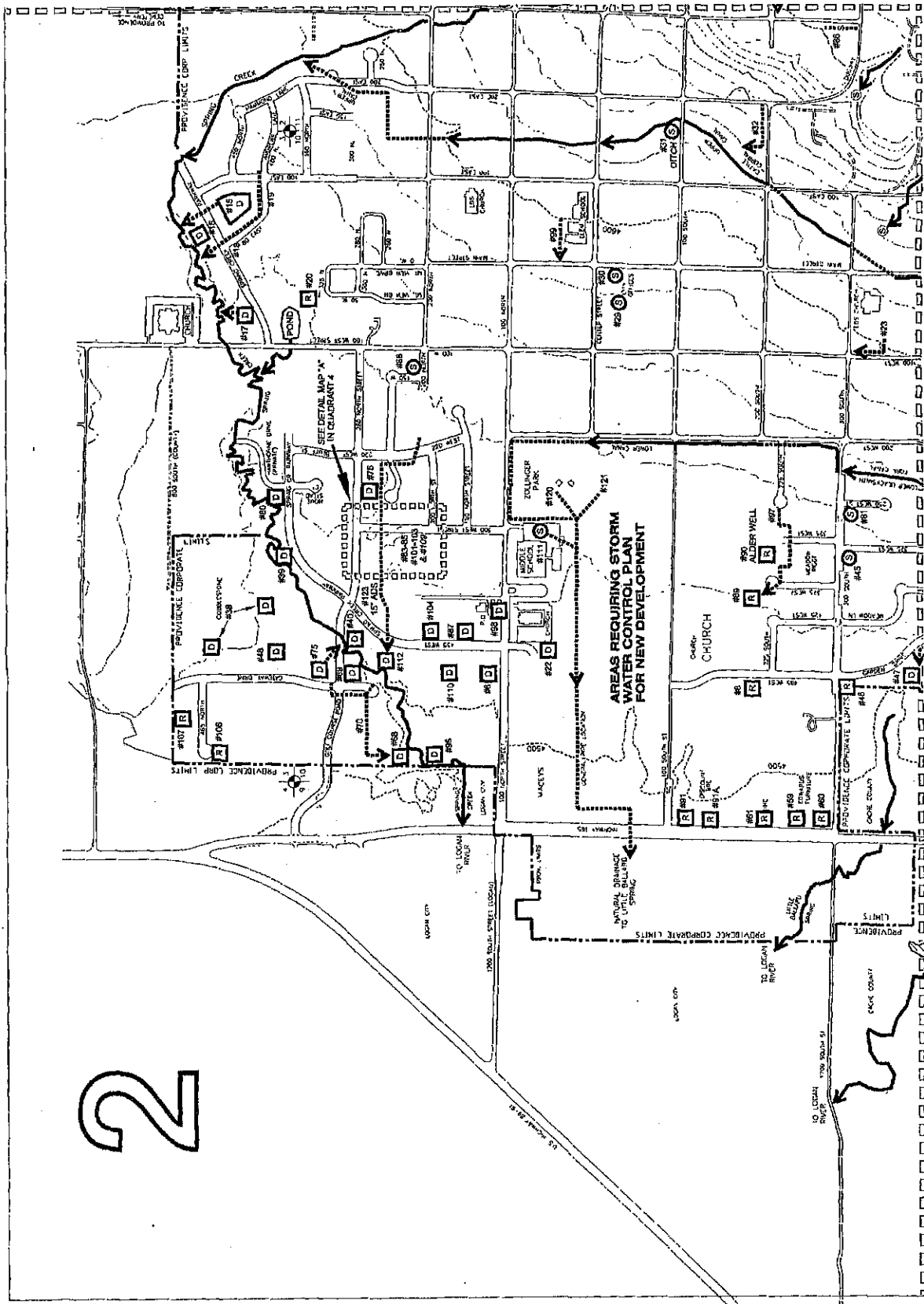
LEGEND

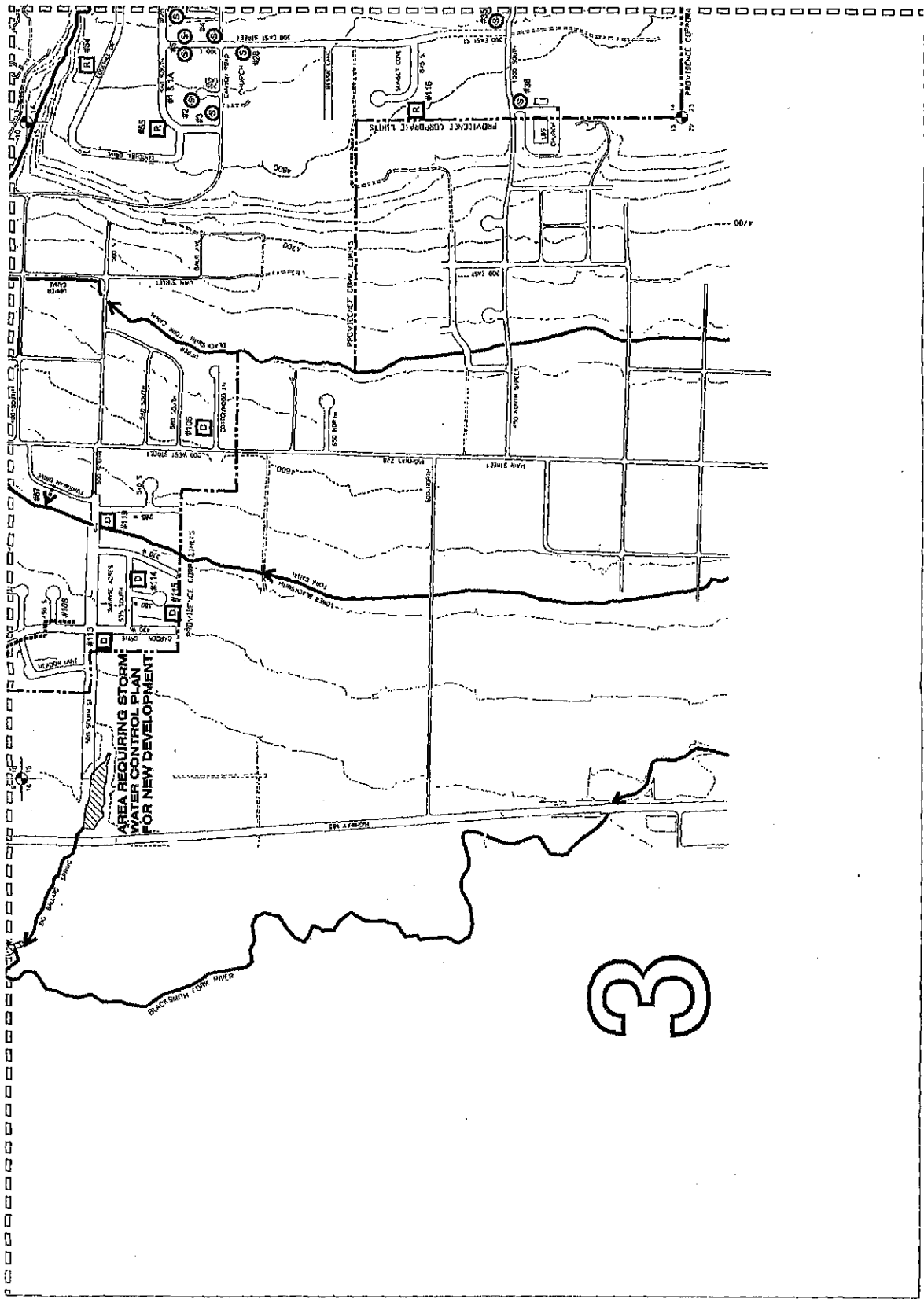
- PROVIDENCE CORPORATE LIMITS
- #100 INVENTORY LIST I.D. NUMBER *
- ☐ DETENTION POND - CITY MAINTAINED
- ☐ DETENTION POND - PRIVATELY MAINTAINED
- ☐ RETENTION POND - CITY MAINTAINED
- ☐ RETENTION POND - PRIVATELY MAINTAINED
- ☉ DRAIN SUMP - CITY MAINTAINED
- ☉ DRAIN SUMP - PRIVATELY MAINTAINED
- ☉ NATURAL SUMP
- ☉ TRENCH SUMP
- PIPE & FLOW DIRECTION
- CANAL OR NATURAL DRAINAGE
- ↔ SECTION CORNER
- QUADRANT No. & BOUNDARY
- 100-FOOT CONTOUR LINE
- 20-FOOT CONTOUR LINE

* SEE ALL APPROPRIATE CITY ENGINEERING DEPARTMENTS FOR SPECIFIC INFORMATION ABOUT EACH STRUCTURE



2





3

